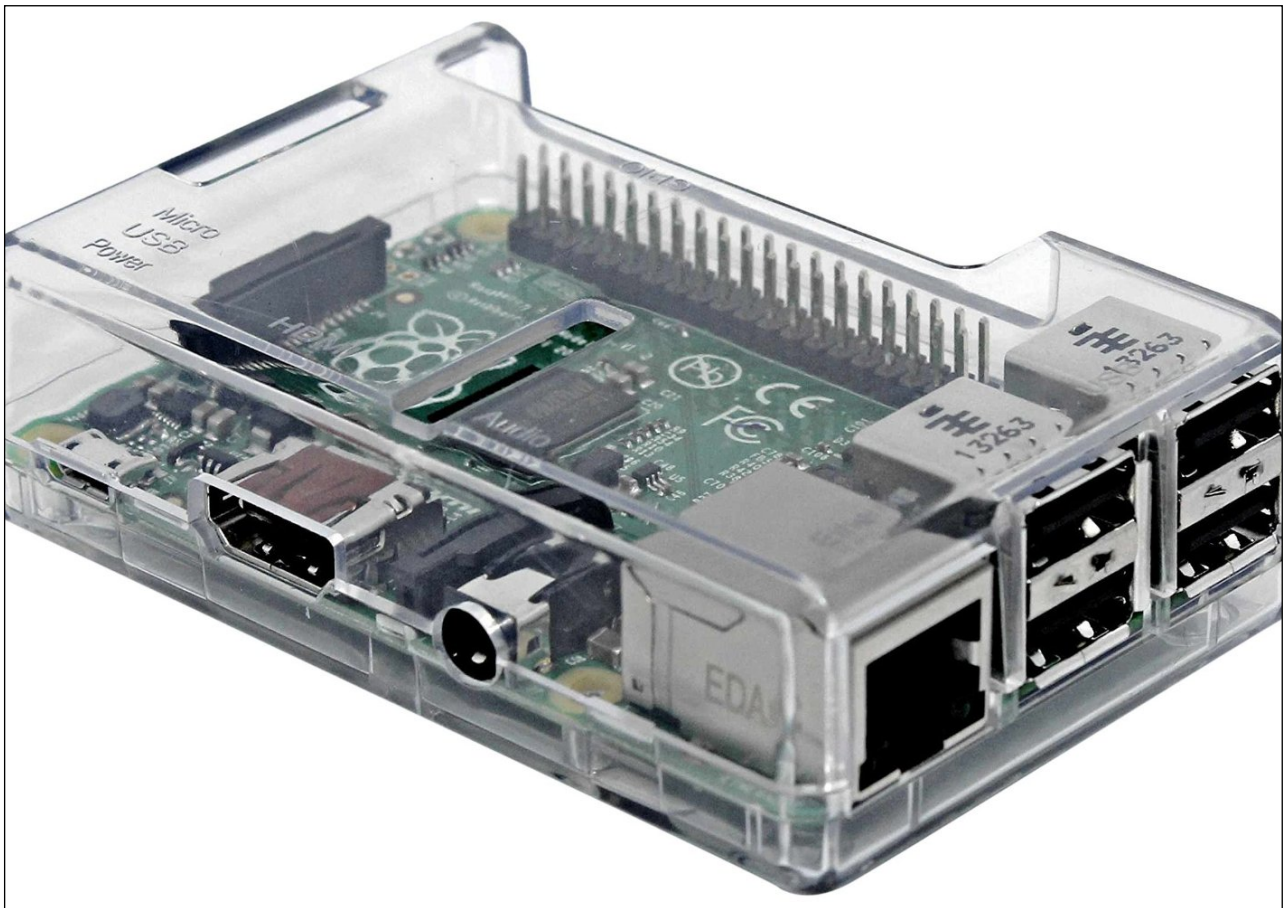

easyLog Datalogger

AkshyaPower Energy Monitoring System



a visual of the easyLog datalogger

easyLog Datalogger

The easyLog datalogger from AkshyaPower comes in 3 different system size: easyLog 16GB, easyLog 32GB or easyLog 64GB. The data logger records the data from inverters, energy meters and sensors and stores them centrally. The values from the easyLog are transferred directly to the AkshyaPower servers via a communication interface. AkshyaPower Cloud offers a range of graphical evaluation options and a precise monitoring system for Technical Operation Management. The data logger also features an interface to download the historical data.

easyLog is a powerful monitoring system that is compatible with many devices including meters, inverters, weather stations and the monitoring portal AkshyaPower. All devices are connected by Ethernet input. Different communication variants are available for sending the measured data via the Internet. When malfunctions are detected in the system, an alert is sent immediately by e-mail, SMS.

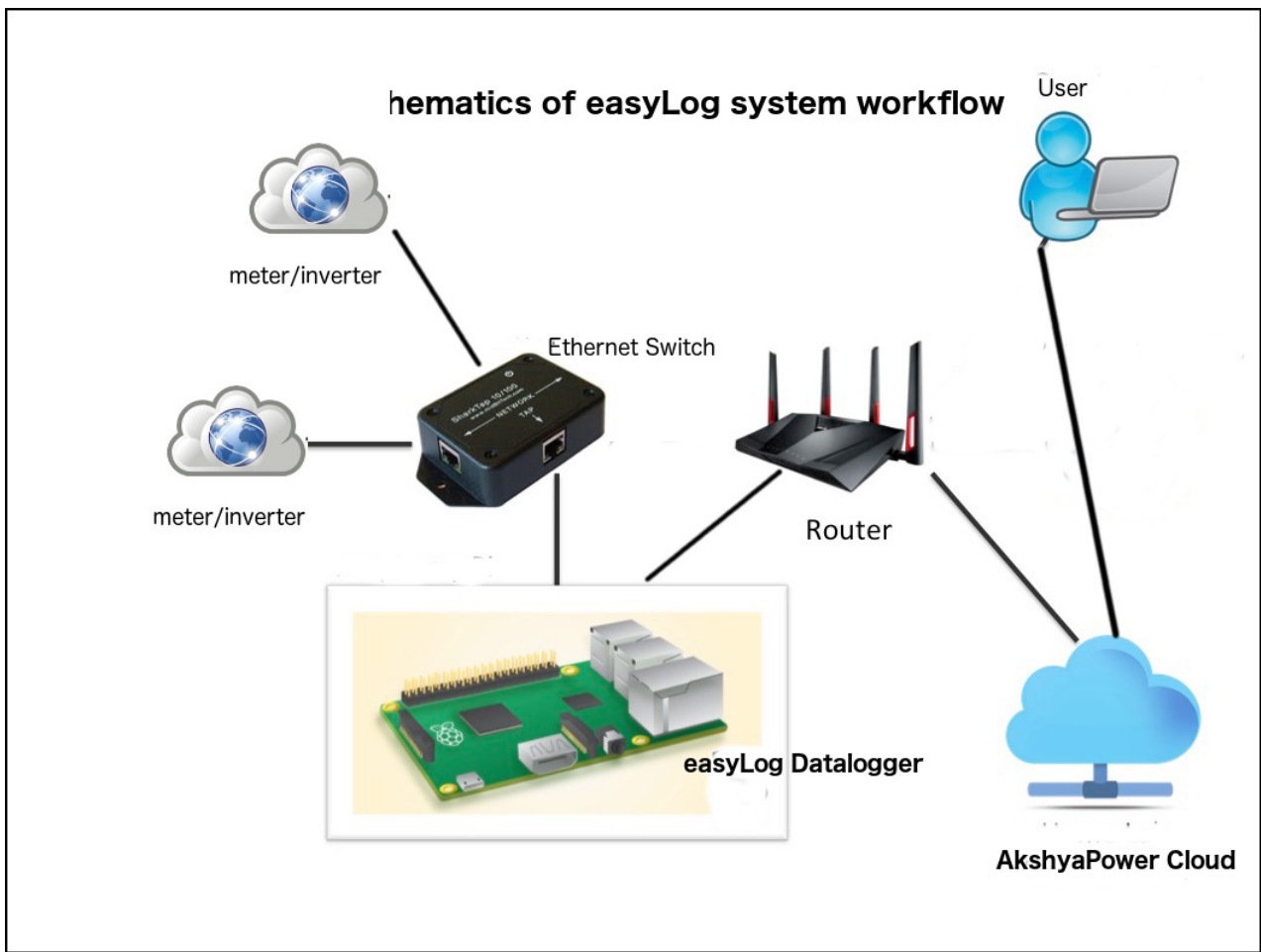
easyLog Features

- 15 Minute Level recording of all system data
- Data transfer to the AkshyaPower Cloud for monitoring and evaluation
- Expansion with additional measuring modules possible
- GPRS/GSM modem available for all devices
- Communication via various interfaces
- Compatible with meters and inverters from all leading manufacturers
- Offline Storage in case of communication failure

easyLog Technical Specifications

- Supply voltage: 85 ... 240 V AC; 5 V DC
- Analog Inputs: 17 GPIO Pins
- Current consumption: max. 800 mA(4.0 W)
- Operating temperature: 0 ... 55 °C
- Dimensions (H x W x D):85.60 mm × 56.5 mm (3.370 in × 2.224 in)
- Installation: Top-hat rail, wall installation
- Communication:
 - Ethernet (100 MBit)
 - 802.11n Wireless LAN
 - Bluetooth 4.1
 - Bluetooth Low Energy (BLE)

easyLog System Schematics



AkshyaPower Cloud Features

- Daily and Historical data visual and textual display
- Export data in Excel and CSV format
- Scheduled daily SMS and Email reports in specified formats
- Secure cloud and hourly data backup
- HTTPS support
- REST API for intergration with other systems